

Frequently Asked Questions

Why are the Jerusalem Township Trustees (Township) and Howard Farms/Reno Beach Conservancy District (RBHFCD) collaborating on this Planning Program?

As residents of our community are aware, several areas within the Township are prone to frequent flooding. Protective levees and dikes, drainage ditches and pumping stations have been constructed over the years to protect residences, businesses, and farmland from severe events. Residential, commercial, and agricultural lands located between the Cooley Canal and Wards Canal and north of US Rt. 2 are surrounded by such levees and dikes and rely on interior drainage and pumping to maintain low water levels. This area between the canals is located entirely within the Township. However, the lands north of the Howard Marsh Metropark are also within the boundaries of the RBHFCD.

What is the Howard Farms/Reno Beach Conservancy District (RBHFCD)?

The RBHFCD is a separate political subdivision of the State of Ohio that oversees water management, including flood-risk reduction, as established under Ohio Revised Code Chapter 6101. The RBHFCD represents roughly 1,400 parcels located in the lands generally between the Cooley Canal, Wards Canal and north of the Howard Marsh Metropark (See Map on Attachment 1). The RBHFCD was originally established as two (2) separate districts that were consolidated through a petition filed with the Lucas County Court of Common Pleas in 1994. The RBHFCD Board Members are appointed by the Lucas County Court of Common Pleas and serve 5-year rotating terms.

What is a 100-year flood event vs. a 1% annual chance exceedance?

The term "100-year flood" is a commonly used misnomer and can be confusing. The correct terminology is a "1% annual chance exceedance event," or 1% ACE event. The 1% ACE refers to the statistical probability of an event happening in a single year. A 1% ACE event has a 1% chance of occurring in any given year. A 1% ACE flood (or larger) event actually could occur multiple times in one year.

What is the current 1% ACE flood elevation?

The current FEMA-defined 1% ACE flood level is approximately 578.0, or about 8.8 feet above the normal low water datum (LWD) for Lake Erie in our area of 569.2.

What primarily causes the flooding in our area?

Significant flooding may be caused by a number of factors, including excessive rainfall and snowmelt. However, the major factor for this area is water levels in Lake Erie that may rise locally during easterly and northerly winds. This increase in water level, combined with runoff during rain or snow melting events may cause the water levels to rise significantly in the Cooley and Wards Canals. Another issue can be related to large waves that can occur during a "nor'easter" storm event and reach the top of the Lakefront Levee. Isolated in-land flooding can also occur when local ditches and tiles are blocked by debris & sediment and/or overloaded due to heavy rainfall & snow melt.

Why are flooding events occurring with greater regularity?

There are several factors that may be contributing to the increased frequency of flood events including runoff from impermeable surfaces (rooftops, parking lots, streets, etc.), modified agricultural practices, climate change and encroachment of development and/or new structures along the rivers and streams feeding into the Great Lakes.

How much will the Coastal & Shoreline Resilience Planning in Jerusalem Township cost Township residents?

Nothing. The entire study effort is funded 100% through a grant acquired by the Township, working in conjunction with the RBHFCD.

Why are our levees being surveyed?

The levees are being surveyed to identify and document points of concern on the flood protection systems surrounding our community. The defects identified through the surveys and anecdotal information gathered from residents will be ranked and prioritized for future capital improvements planning to enhance the resiliency of the system and continue to provide long-term flood protection.

Frequently Asked Questions

Who is responsible for maintaining the levees?

Maintenance of the various levees and dikes is the responsibility of a combination of efforts from the US Army Corp of Engineers (USACE), RBHFCD, Toledo Metroparks and private landowners. The levee along the Lake Erie shoreline and continuing southwesterly along Wards Canal ("the Project Levee") was constructed by the US Army Corp of Engineers (USACE) through grant funding acquired from the US Congress. The USACE Project Levee is maintained by the RBHFCD and is currently in Active Status, meaning that USACE will aid in the reconstruction of the lakefront levee should a failure occur. The levees surrounding the Howard Marsh Metropark (Phases I & II) are owned and maintained by the Toledo Metroparks and were constructed to meet ODNR Dam Safety Requirements, including spur dikes connected into the other flood protection systems. The remaining legacy levees throughout the RBHFCD boundaries and Township areas are on private properties. The maintenance of the legacy levees north of Howard Marsh Phase II is the responsibility of the RBHFCD in collaboration with the respective landowners. The legacy levees outside of the RBHFCD Boundary are the responsibility of the private landowners.

What kind of work will you be doing on the levees?

Field investigations consist only of site walks and visual inspections of the levees. No excavations, tree clearing, or other improvements will be conducted as part of this study. Future improvements, if they occur, are to be determined based upon the outcome of this study.

How long will this study take?

Field investigations were completed in May. Compilation of data and engineering analyses will occur throughout this summer, with a draft report due to the Township and RBHFCD in October 2023. The final report is planned to be completed by January 2024. A second public meeting will also occur.

What if I don't want any changes to our levees?

Modifications to the existing levee systems will be evaluated for prioritization and development of conceptual designs and cost estimates for planned improvements, if any. Significant opportunity for additional public input and comment will be provided should there be a plan developed for capital improvements. Processes for the completion of projects that are deemed to be required for public health, safety, and welfare, including flood protection, are outlined in the Ohio Revised Code, including processes and procedures for appeal.

What are the next steps?

Civil & Environmental Consultants (CEC) is the engineering firm retained to conduct the levee survey. CEC will continue to assemble data and develop preliminary recommendations for presentation to the Township and RBHFCD. All information will be compiled into an engineering report, with the draft anticipated in October 2023 and final report by December 31, 2023. A second outreach meeting will be held late in December 2023 or January 2024 to allow residents to see the recommendations. Once this study is completed, the Township and RBHFCD will begin to evaluate and pursue opportunities for additional funding to enable the cost-effective completion of necessary improvements.

Where can I find more information?




Additional information related to the Ohio Lake Erie Commission Coastal & Shoreline Resilience Planning Program may be found on the Jerusalem Township Website <https://twp.jerusalem.oh.us/jerusalem-twp-levees/> General updates will also be discussed periodically at the regular meetings of the Township and RBHFCD.

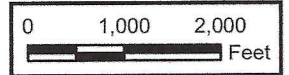
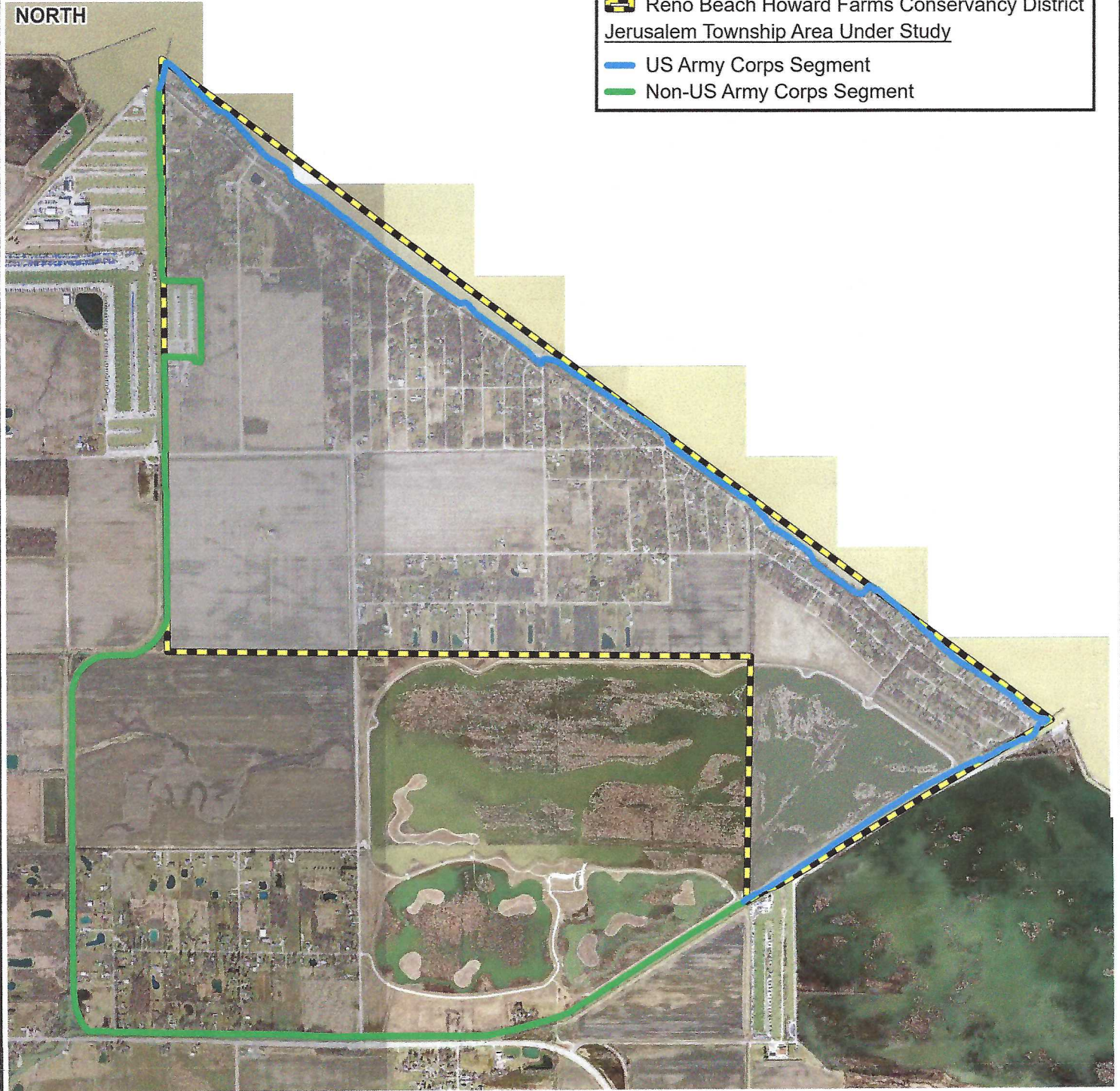
Thank you for your interest and assistance in developing this Ohio Lake Erie Commission Coastal & Shoreline Resilience Planning Program!



NORTH

Legend

-  Reno Beach Howard Farms Conservancy District
- Jerusalem Township Area Under Study
-  US Army Corps Segment
-  Non-US Army Corps Segment



REFERENCE: USGS TOPOGRAPHIC MAP/ ARCGIS MAP SERVICE: [HTTP://GOTO.ARCGISONLINE.COM/MAPS/USA_TOPO_MAPS](http://gto.arcgis.com/maps/usa_topo_maps), ACCESSED 6/7/2023



Civil & Environmental Consultants, Inc.

One SeaGate - Suite 2050 - Toledo, OH 43604

419-724-5281 - 855-274-2324

www.cecinc.com

JERUSALEM TOWNSHIP
OLEC COASTAL & SHORELINE
RESILIENCE PLANNING PROJECT
LUCAS COUNTY, OHIO 43412

LEVEE SYSTEM OVERALL SURVEY FIGURE

DRAWN BY:	SSH	CHECKED BY:	CJG	APPROVED BY:	DMB*	FIGURE NO:	1
DATE:	JUN 07, 2023	DWG SCALE:	1" = 2,000'	PROJECT NO:	326-627		

Signature on File *

P:\320-000\326-627-GIS\Maps\WaterResources\326627_JerusalemTWP.aprx - 6/7/2023 - 5:08 PM (shonigford)