

Coastal Resiliency Planning in Jerusalem Township

June 13, 2023

Presented by:

Mark Sattler, Jerusalem Township Trustee

**Adam Hoff, Reno Beach/Howard Farms
Conservancy District Board Member**

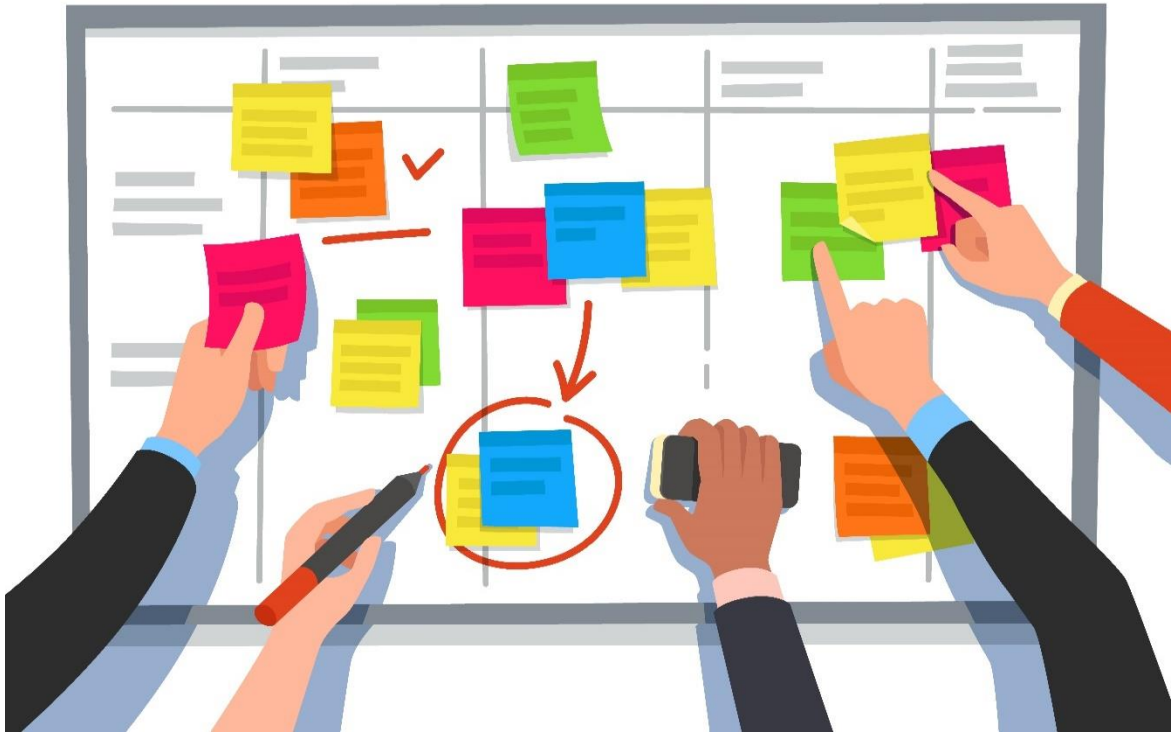
**Deanna Bobak, Civil & Environmental
Consultants, Inc.**

Prepared for:

**Jerusalem Township Trustees
Meeting**



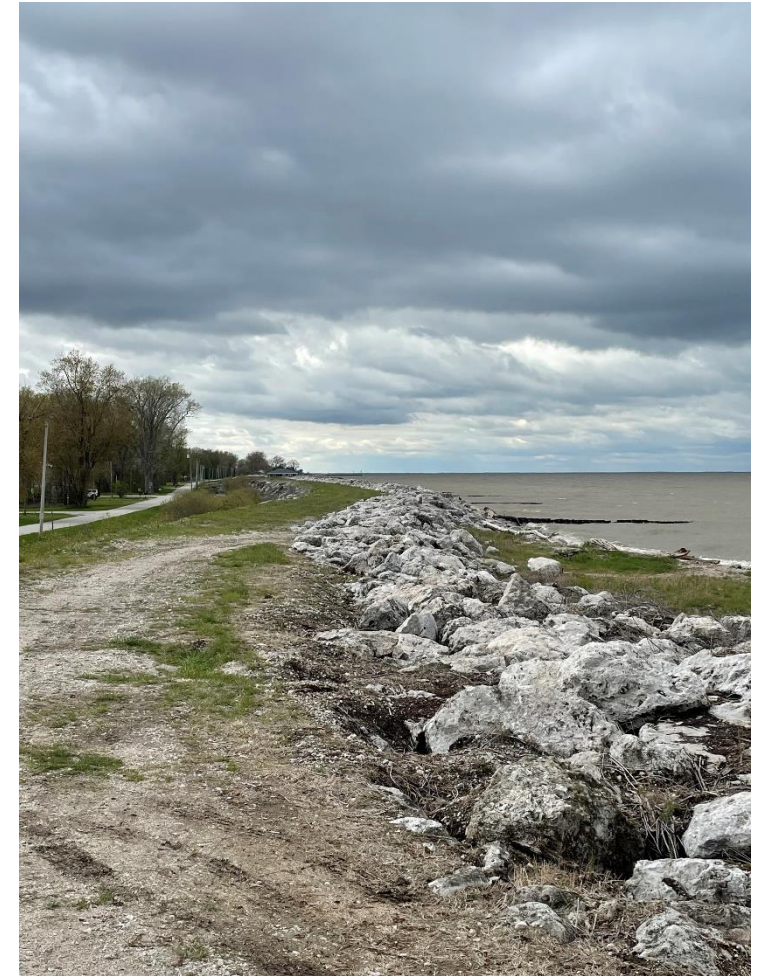
Today's Agenda



- Project Background
- Field Assessment Work
- Next Steps

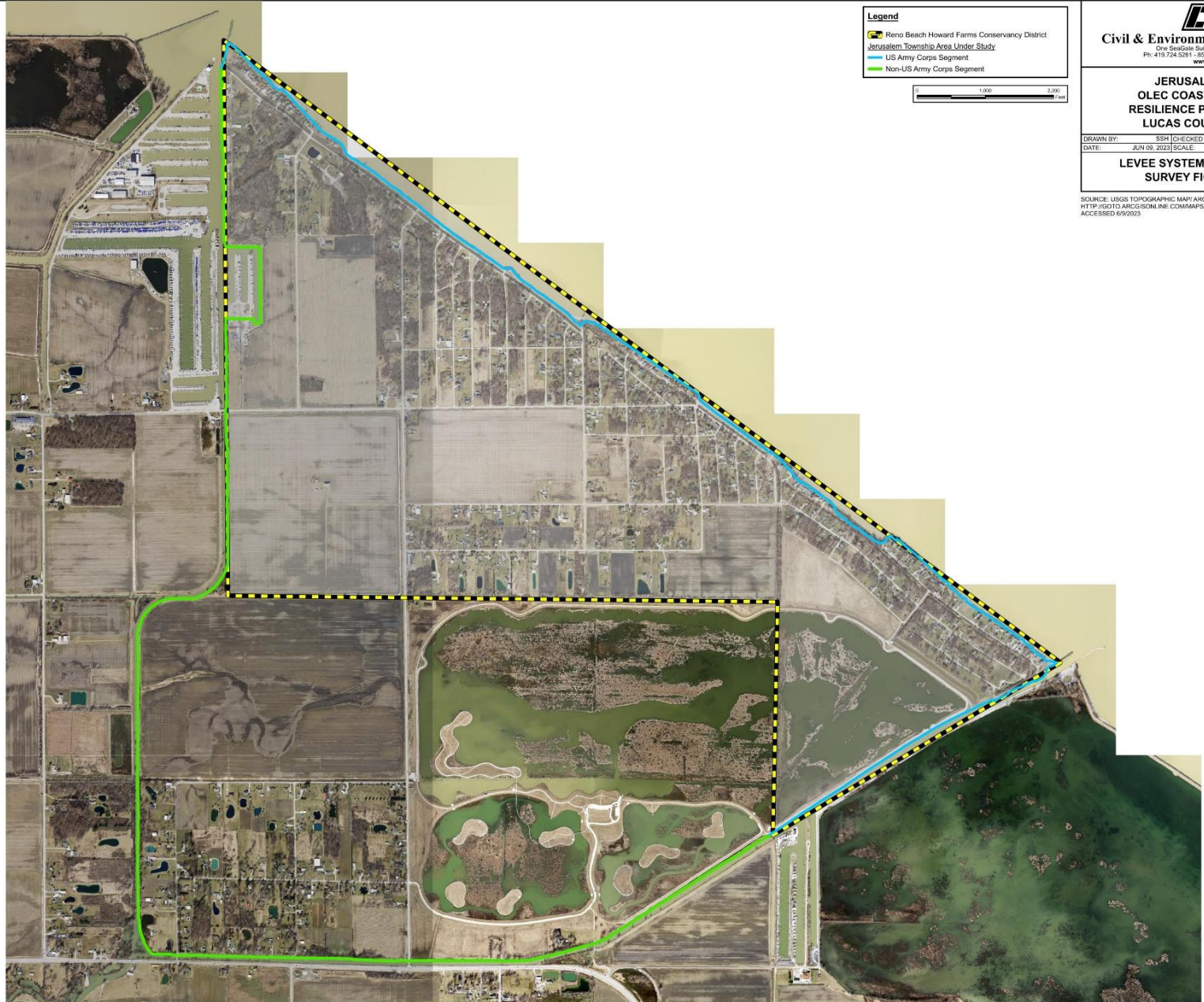
2022: Ohio Lake Erie Commission Coastal Resilience Grant Application

- Partnership between Jerusalem Township Government and Reno Beach/Howard Farms Conservancy District
- Establishes a framework for risk assessment of the comprehensive levee system
 - Includes assessment of both “Project” levee and non-Project levee
 - Facilitates a strategic plan for future implementation
 - Builds resiliency for future flood events and rising lake levels





H
G
F
E
D
C
B
A



Legend

- Reno Beach Howard Farms Conservancy District
- Jerusalem Township Area Under Study
- US Army Corps Segment
- Non-US Army Corps Segment

0 1,000 2,000 Feet

C&E
Civil & Environmental Consultants, Inc.
One Seaboard Square 2020 - Toledo, OH 43604
Ph: 419.724.5281 • Fax: 419.724.5286
www.cecinc.com

**JERUSALEM TOWNSHIP
OLEC COASTAL & SHORELINE
RESILIENCE PLANNING PROJECT
LUCAS COUNTY, OHIO 43412**

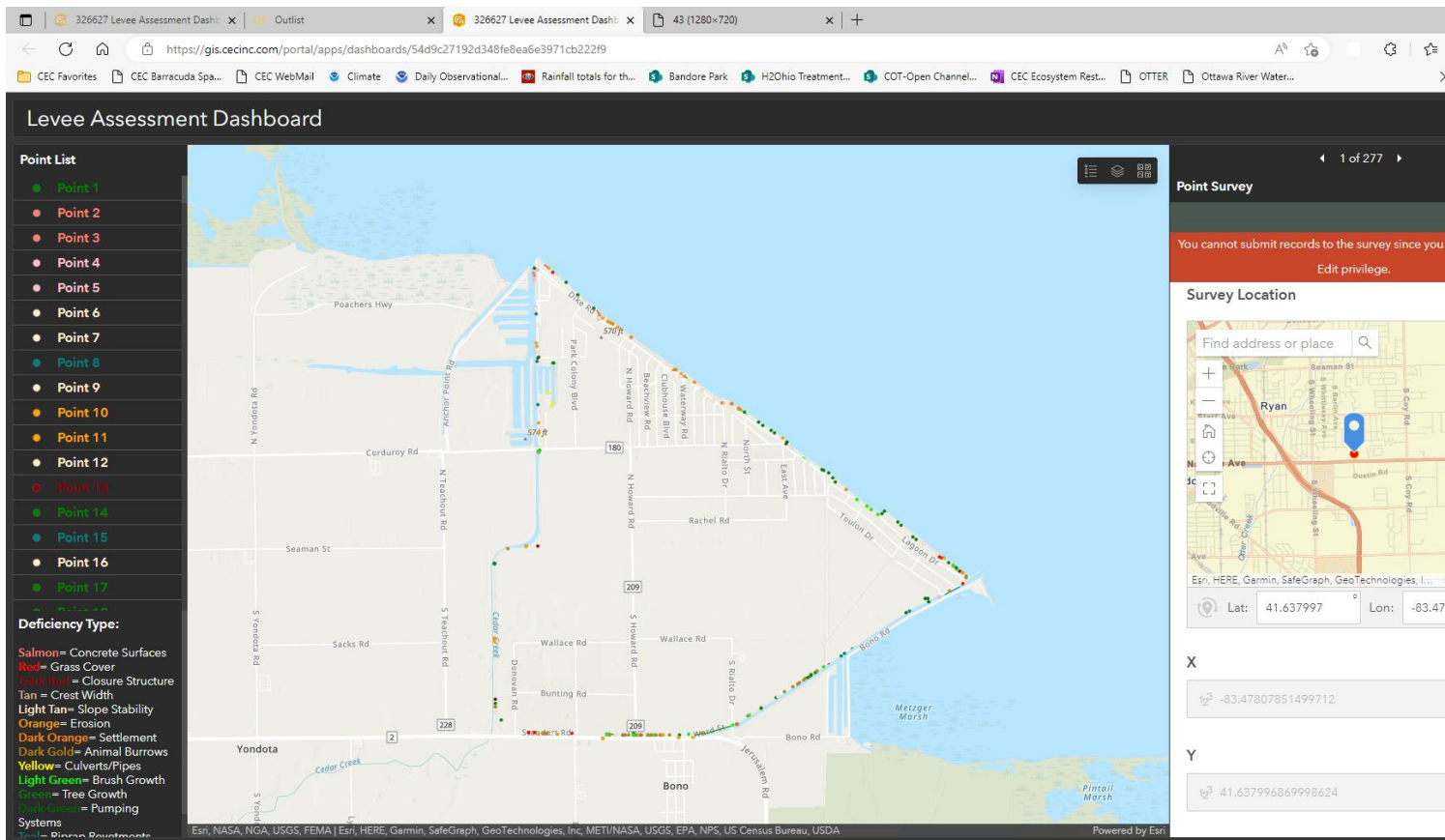
DRAWN BY: BSH	CHECKED BY: CJO	APPROVED BY: DMF
DATE: JUN 09, 2023	SCALE: 1" = 850'	PROJECT NO: 248-627
LEVEE SYSTEM OVERALL SURVEY FIGURE		1

SOURCE: USGS TOPOGRAPHIC MAP/ARCGIS MAP SERVICE
HTTP://GOTO.ARCGISONLINE.COM/MAPSUSA_TOPO_MAPS,
ACCESSED 6/9/2023

Signature on File

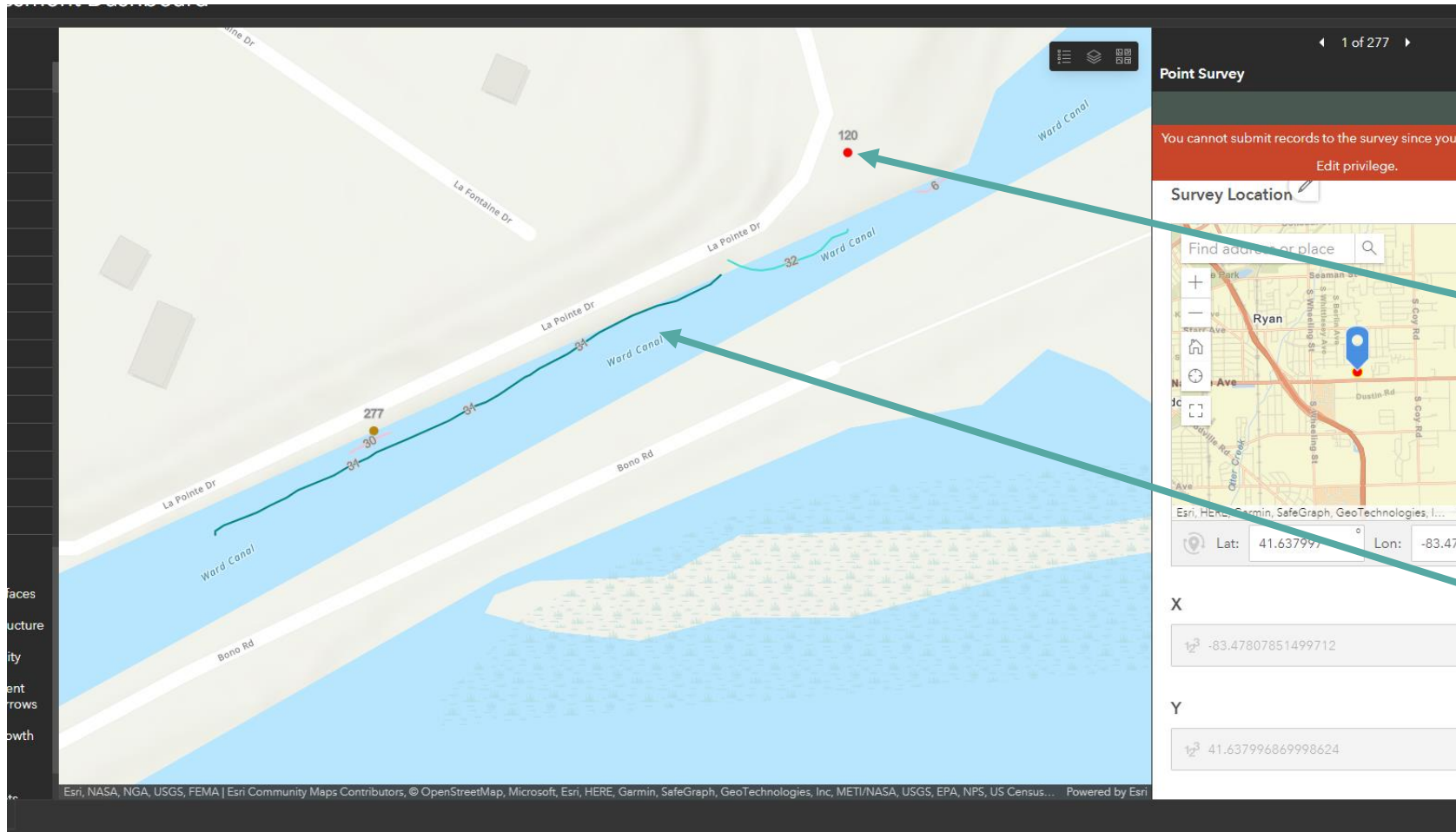


Field Reconnaissance: Assessment Characteristics



- Vegetative growth
- Slope stability
- Erosion
- Settlement/depression
- Bank protection
- Animal burrows
- Seepage
- Infrastructure

Field Reconnaissance: Data Capture



Point Data

Line Data



Field Reconnaissance: Examples



Next Steps

- QA/QC data in the online database
- Prioritize segments for rehabilitation
 - Model various flood scenarios to identify low spots in the levee system (overtopping)
 - Develop a prioritization system based on observed deficiencies, likelihood of failure, potential impacts
- Develop some conceptual projects to address deficiencies



Public Input – Anecdotal Evidence

- Anecdotal evidence can assist in the prioritization process. It can:
 - Provide record of previous maintenance on private lands
 - Document historical happenings
 - Shed light on recurring problem areas



Project Timeline

Task Description / Milestone										
	Mar	April	May	June	July	Aug	Sept	Oct	Nov	Dec
Engineering Reconnaissance	X	X	X							
Risk Assessment and Prioritization			X	X	X	X	X			
Implementation Plan Development						X	X	X	X	X
Public Engagement Meetings				X					X	
Stakeholder Engagement Meetings				X					X	

Questions?

Mark Sattler, Jerusalem Township Trustee;
mark.sattler@twp.jerusalem.oh.us; 419-836-8921

Adam Hoff, Reno Beach/Howard Farms Conservancy District;
ahoff@rbhxcd.org; 419-466-3343

Deanna Bobak, Civil & Environmental Consultants;
dbobak@cecinc.com; 419-214-4414

